



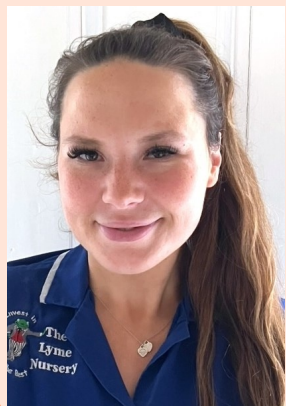
The Lyme Nursery

Complete Nursery Day Care
and
Early Years Learning



Dear Parents, apologies for the few weeks of missing our Newsletter. We're back on track now though, giving you a little bit of news from the Nursery every fortnight. Don't forget to put your clocks back this weekend. Although when it's dark of an evening it's nice to light your candles, switch your lamps on and cosy up underneath a blanket (heaven forbid we switch the heating on just yet)! It also has an impact on the little ones, they tend to go to bed even earlier when it's darker outside rather than the sun still shining in at 8pm! Have a good read, Mandi.

Who's who here at Nursery - Georgia - Supply



In September we welcomed back Georgia on supply after she left to go on maternity leave back in June 2022. Georgia has always been such a popular member of staff within the Nursery with her peers, parents, but most of all with the children. Her happy-go-lucky nature, big smile, laugh and lust for life gives even more energy and buzzing atmosphere to the Nursery (even though we don't need more .. the more the merrier)! Georgia is a Level 2 fully qualified Nursery Practitioner having completed her Modern Apprenticeship here at the Nursery since 2018. It's been so lovely to see how much everyone has welcomed Georgia back, it's like she's never been away. Always stay as you are Georgia, you're our female Peter Pan xxx

PARENTS EVENING:

What a fab evening we had on Wednesday 25th October here at the Nursery. We welcomed our parents and families from 7pm until 9pm, with drinks upon arrival, the atmosphere was amazing. It's always a pleasure for us to give parents even more time to meet and talk to their child's key worker, talk about how their child/children are getting on at the Nursery, who they play with, what they like, when do they move into the next room and also discuss the most recent Summative Assessment. It's great to see parents talking to other parents and have the full Nursery team available to speak to everyone. It's of course not the same without the children present. (It's also much tidier, however, we'd prefer to have the mess and laughter which we are used to every day and love!!.)

OUTDOOR PUSHCHAIRS/PRAMS:

Just a reminder, as we head into the cooler, wetter, winter months please can you ensure that all pushchairs which are left here be protected with a rain-cover. If you leave them outside of the garden safety gates we will bring them into the security of the Nursery in the morning. As always we are more than happy to keep them here for you during the day but don't have the space to store them inside. Thank you for your support.

DIARY DATES:

- > W/c 30th Oct Halloween Funweek
- > Wed 8th Nov Paolo Loraso photography
- > Fri 17th Nov Children in Need
- > Thurs 14th Dec Christmas Lunch
- > Wed 20th Dec Party Day
- > Fri 22nd Dec closed for Xmas-New Year
- > Tues 2nd Jan re-open ready for 2024.

Invest ... in the best!

with The Lyme Nursery www.lymenurseryschool.co.uk / Tel 01782 616188